



EWT – Website Cold Chain Monitoring

INSTRUCTION MANUAL v 1 August 2006

1. About Escort Web Track

- Escort Web Track (EWT) is a Cold Chain Manager system for Programming and Downloading Escort Data Loggers. Key features include:
 - a. SPEED: Faster download and upload of data, and programming of loggers
 - b. SECURITY: Log in requires a password combining alpha, numeric and symbol and > than 7 characters and passwords are case-sensitive. Back up server in the US, ACP, a MS Gold registered company. They supplement their Server deployments with a security audit/vulnerability assessment program that covers risk-analysis and best practices for internal and perimeter networks.
 - c. DIGITAL SIGNATURES: All files automatically digitally signed upon download.
 - d. INTEGRATION: Seamless integration with Console Software
 - e. NAVIGABILITY: Navigation is simple and intuitive
 - f. CROSS-PLATFORMED: Loggers and hardware cross-platformed across web and Console.

2. Log In

- Go to www.escortwebtrack.com
- Log in at the Main screen with your **Account, User Name and Password Details** supplied to you by your administrator. (See Figure 1 below)



Figure 1: Login Screen

- Upon successful log in, you will be taken to the next screen which is the Receiver Main Menu (See Figure 2 below)

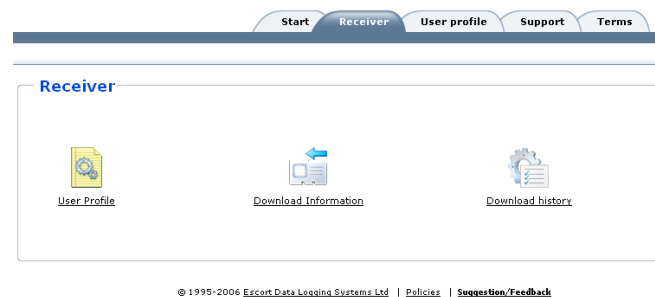
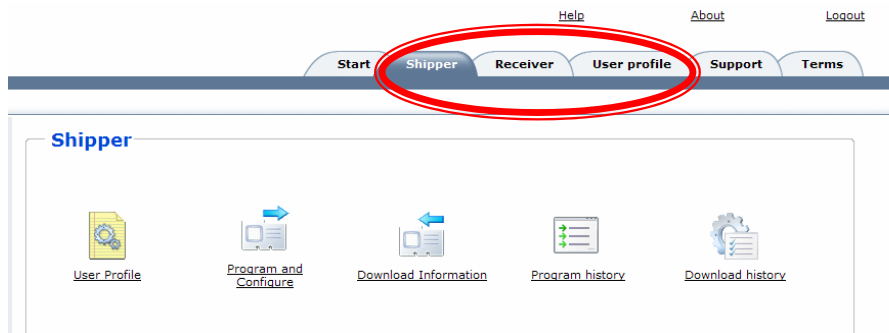


Figure 2: Receiver Main Menu

3. Receiver Functions

- The Receiver functions can be seen in Figure 3 below:

Figure 3: Receiver Functions



- Receiver functions include the User Profile (individual user's COM port settings, user personal information etc), and downloading data loggers.
- Programming data loggers
- Access Programmed Data Logger History
- Access Downloaded Data Logger History

4. User Profile

- Select display temperature, preferred COM port settings, and email address.
- Choose **Save** to retain these settings. (See Figure 4).

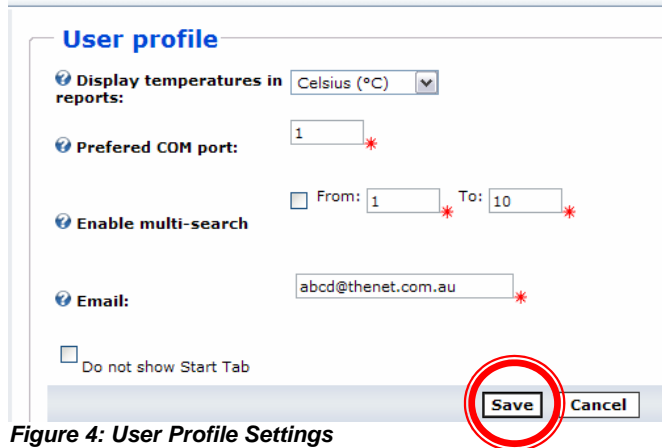


Figure 4: User Profile Settings

5. Connect Logger

- Connect the data logger to your serial or USB port.

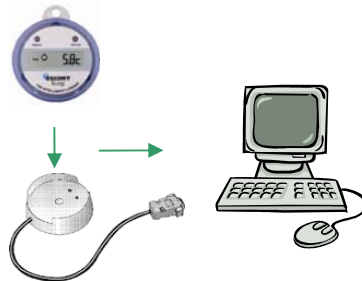


Figure 5: Connect Data Logger to PC

6. Download

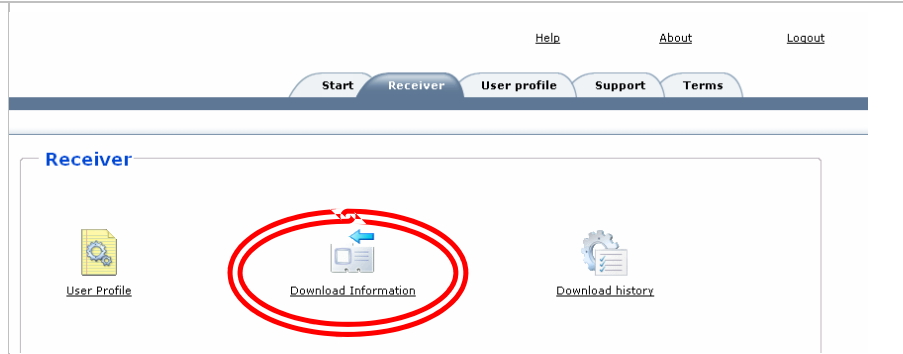


Figure 6: Download

- Select **Download** icon to commence downloading the connected data logger.
- Select **Search** for EWT to find the Data Logger connected to your COM port. See Figure 7 below.

** Note: refer to below instructions concerning installation of Active X component.

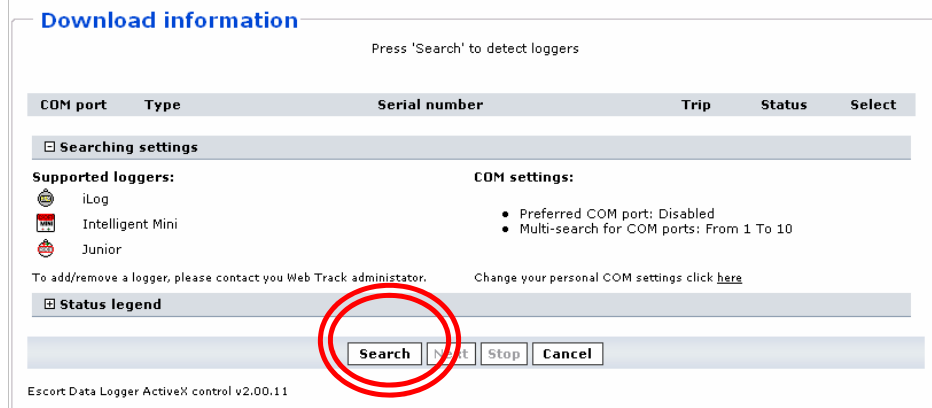


Figure 7: Search for Connected Loggers

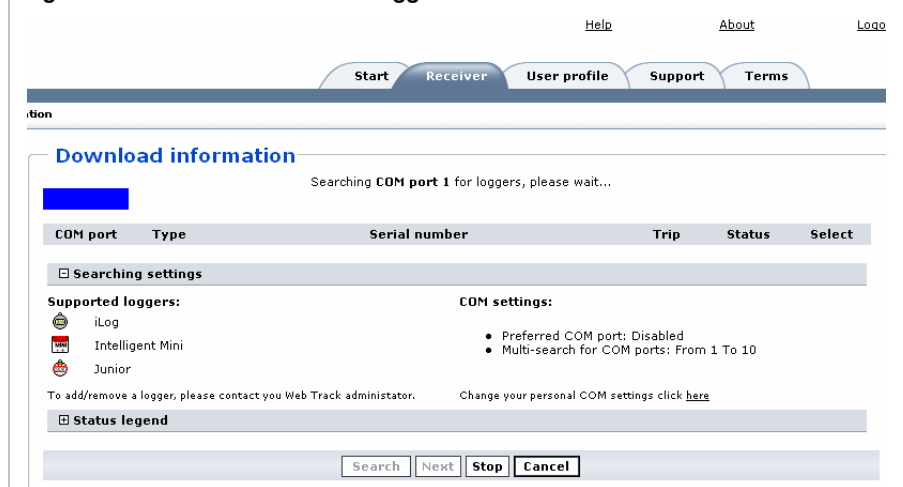


Figure 8: Search in Progress for Connected Loggers

7. Active-X

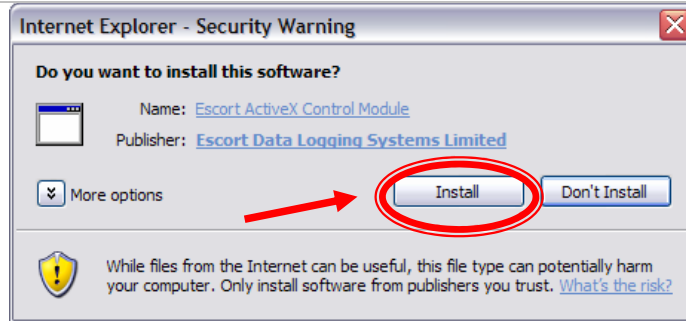


Figure 9: Active X Control

- The Active X control is required on **each individual PC** that will be programming or downloading a data logger with the EWT system.
- To only **view** data history (i.e. previously downloaded data loggers), this control is not required.
- As soon as you begin to program, the Internet Explorer message will appear on screen if you wish to install the Active X. **Select Install** (See Figure 9 above) and the component will be installed on your local computer.

****Note** – if Internet Downloads are not allowed by an individual user, contact your organisations' IT Support to install the Active X on your PC. This is essential for programming and downloading a data logger.

8. Complete Download of Data Logger

- Once the Active X is installed, as per **7.0 Active X**, Escort Web Track will **download** the connected data loggers.
- Figures 10 (a) and 10 (b) below show the **Completed Download Screen** and **Successful Download** Notification message.

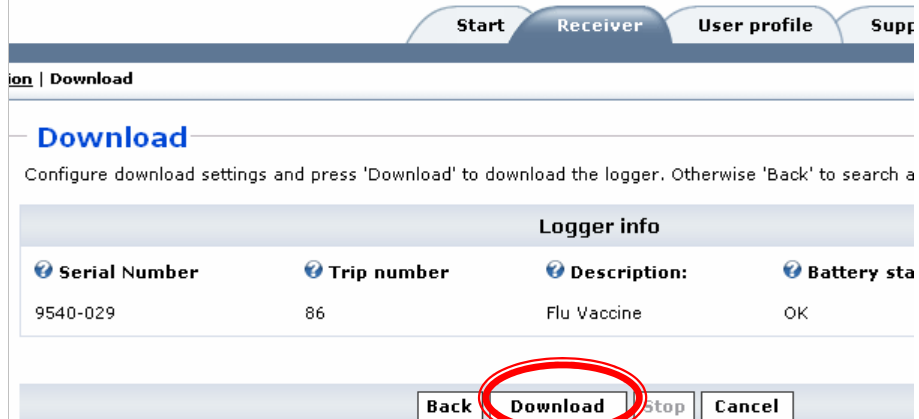


Figure 10 a): Completed Download Screen

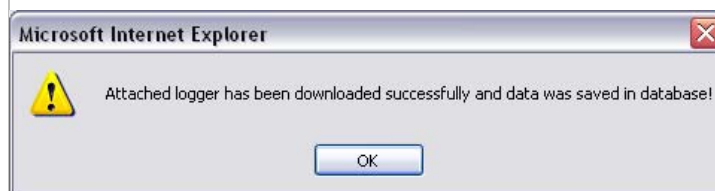


Figure 10 b): Successful Notification Message

9. Program & Configure

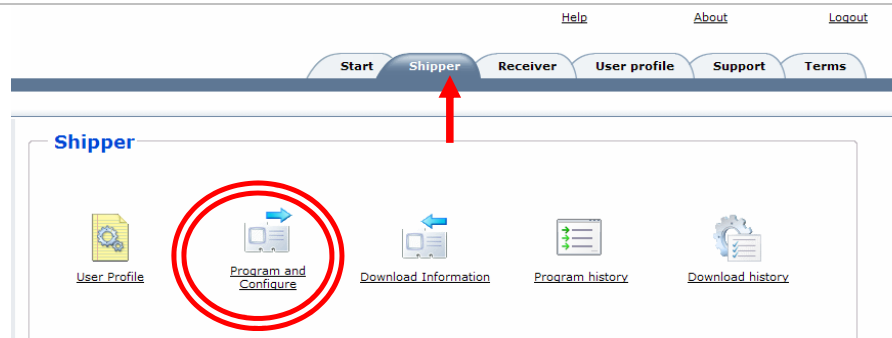


Figure 11: Program & Configure

- To **program** a data logger, Select the **Shipper** Tab
- Select **Program and Configure** icon to commence programming the connected data logger.
- Select **Search** for EWT to find the Data Logger connected to your COM port. See Figure 11 below.

** Note: refer to 7.0 Active X instructions concerning installation of Active X component if it has not been installed on your PC.

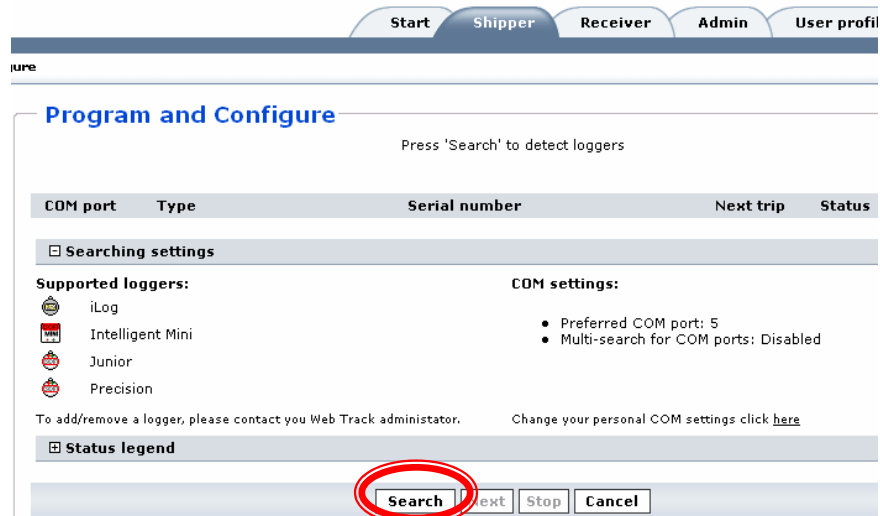


Figure 12: Search for Connected Loggers

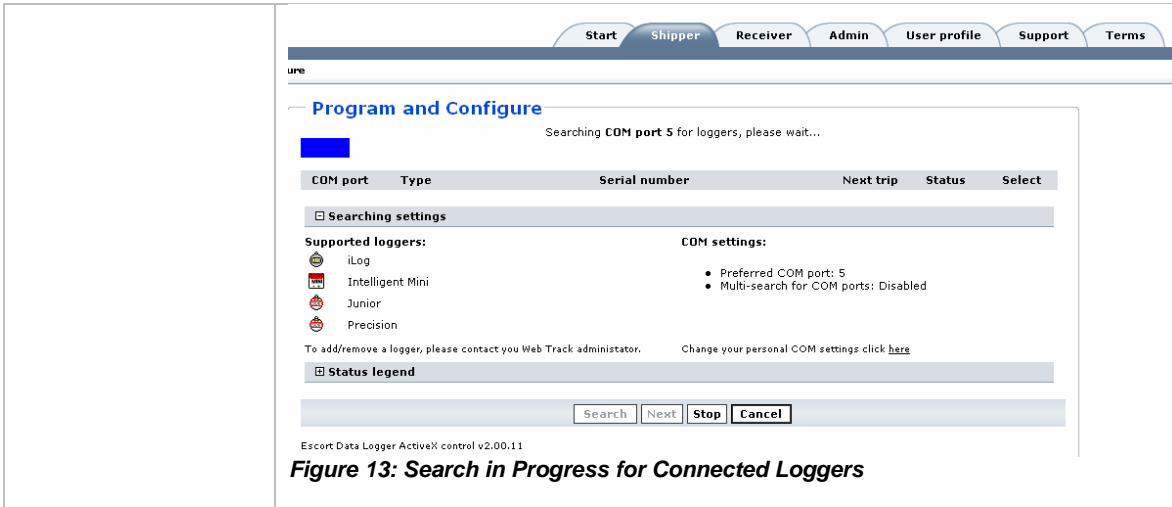


Figure 13: Search in Progress for Connected Loggers



Figure 14: Successful Program

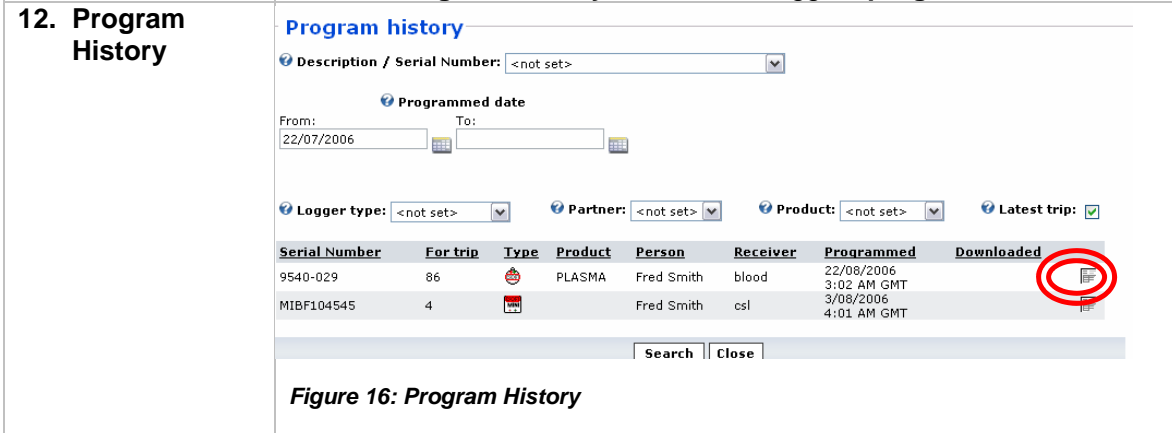
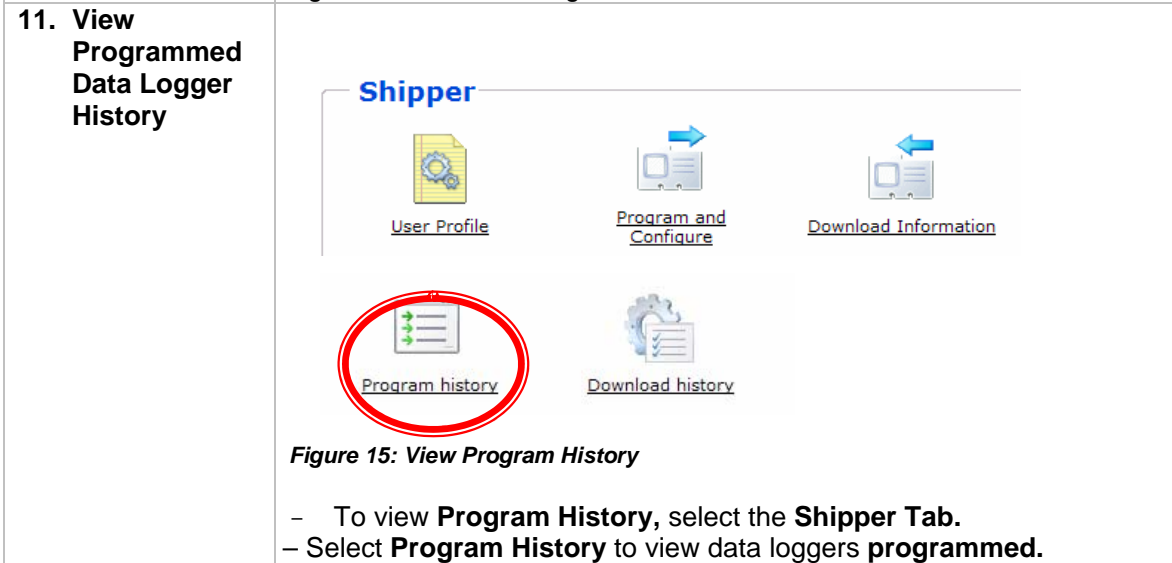


Figure 16: Program History

- **Access Summary Information:** Data logger date programmed, trip number, name of person who programmed logger, receiver account and logger type.
- **Select graph icon** to view detailed program information loggers programmed.

[Print](#) [Close](#)

Date and time are expressed as UTC (GMT) time.

Program summary				
Programmed	Programmed by (user)	Downloaded	Downloaded by (account)	The latest trip
22/08/2006 3:02 AM GMT	Fred Smith	No data	No data	86

Logger info				
Serial Number	For trip	Description	Battery status	Type
9540-029	86	Flu Vaccine	OK	Junior

Program logger settings				
For account:	Currency:	Protection:	Reference:	Order:
blood	Not set	Download shipper or receive account only: NO See data shipper account only: YES	C7990526X	Not set

Program notes:


Sensor Configuration				
Product:	Alarm	Number out of specification:		
PLASMA		0		
Name	Scale	Spec. min	Spec. max	
Air Temp Internal	Celsius (°C)	0.0	20.0	
Air Temp External	Celsius (°C)	0.0	20.0	

Startup and alarm settings			
Start new log trip	Start delay	Finish log trip	Interval between each reading
Manual	1 min 0 sec	after 2000 reading(s)	1 min 0 sec


Figure 17: Detailed Program History Information

13. View Downloaded Data Logger History


Shipper




[User Profile](#)




[Program and Configure](#)



[Download Information](#)



[Program history](#)



[Download history](#)

Figure 18: View Download History

- To view **Download History**, select the **Shipper Tab**.
- Select **Download History** to view data loggers **downloaded**.

14. Download History

Download history

Description / Serial Number: <not set>

Downloaded date
From: 22/07/2006 To:

Logger type: <not set> Partner: <not set> Product: <not set> Latest trip:

Serial Number	Trip	Type	Product	Shipper	Downloaded by	Downloaded	Programmed	
9540-029	86		PLASMA	TEST1.csl	TEST1.blood	22/08/2006 4:20 AM GMT	22/08/2006 3:02 AM GMT	

Figure 19: Download History

- **Access Summary Information:** Data logger date downloaded, trip number, name of person who programmed logger, receiver account and logger type.
- **Select graph icon** to view detailed downloaded logger information programmed.
- **Select** from the following data information options:

- a) LCF File (Escort Console .lcf file)
- b) MS Excel File (.xls)
- c) Line Graph (jpeg)
- d) List of Readings (jpeg)

a) LCF File:

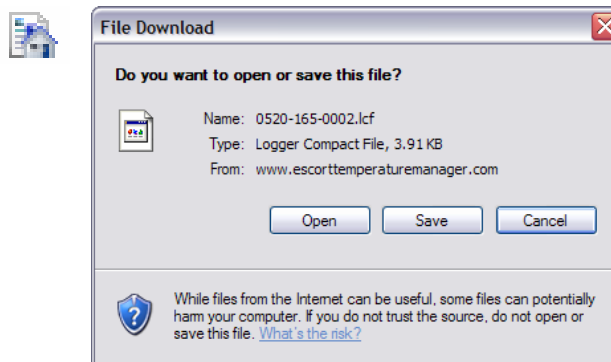


Figure 20: Save LCF File

- Click on LCF button and save to your preferred location

b) MS Excel File:

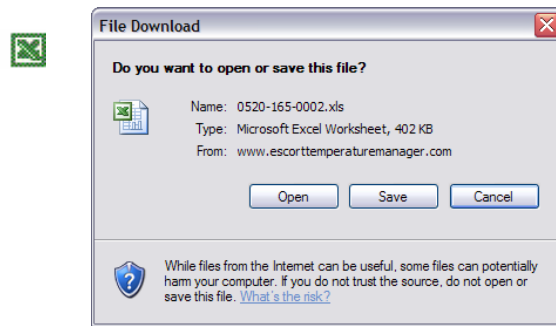


Figure 21: Save MS Excel File

- Click on LCF button and save to your preferred location

c) Line Graph:

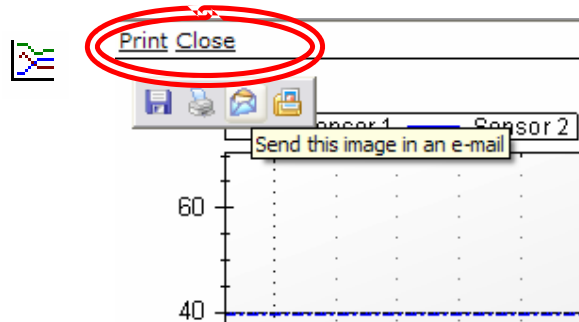


Figure 22: Save Line Graph File

- Click on the **Line Graph** icon and jpeg report opens on your screen. **Save, email or Print** from this location.

d) List of Readings:

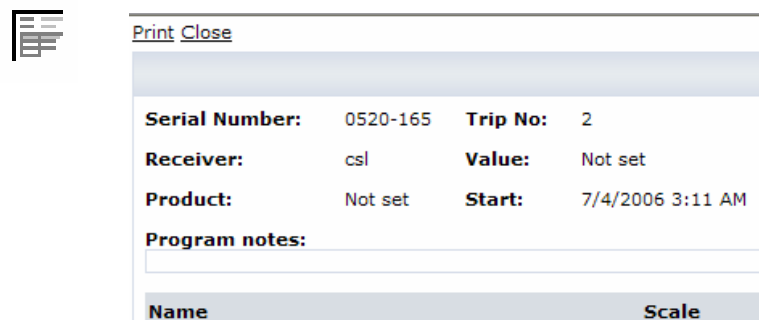


Figure 23: Save List of Readings File

- Click on the **List of Readings** icon and jpeg report opens on your screen. **Save, email or Print** from this location.

15. Log Out

When completed downloading data loggers, click on **Logout** (located in the **top right-hand corner** of the screen) to log out of the EWT System.

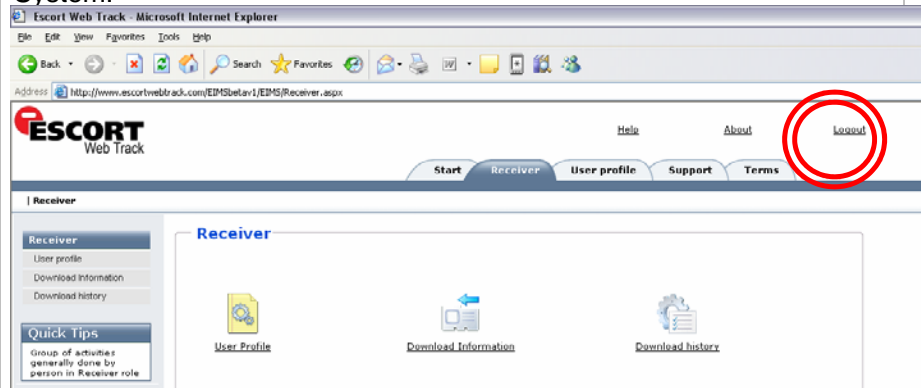


Figure 24: Log Out